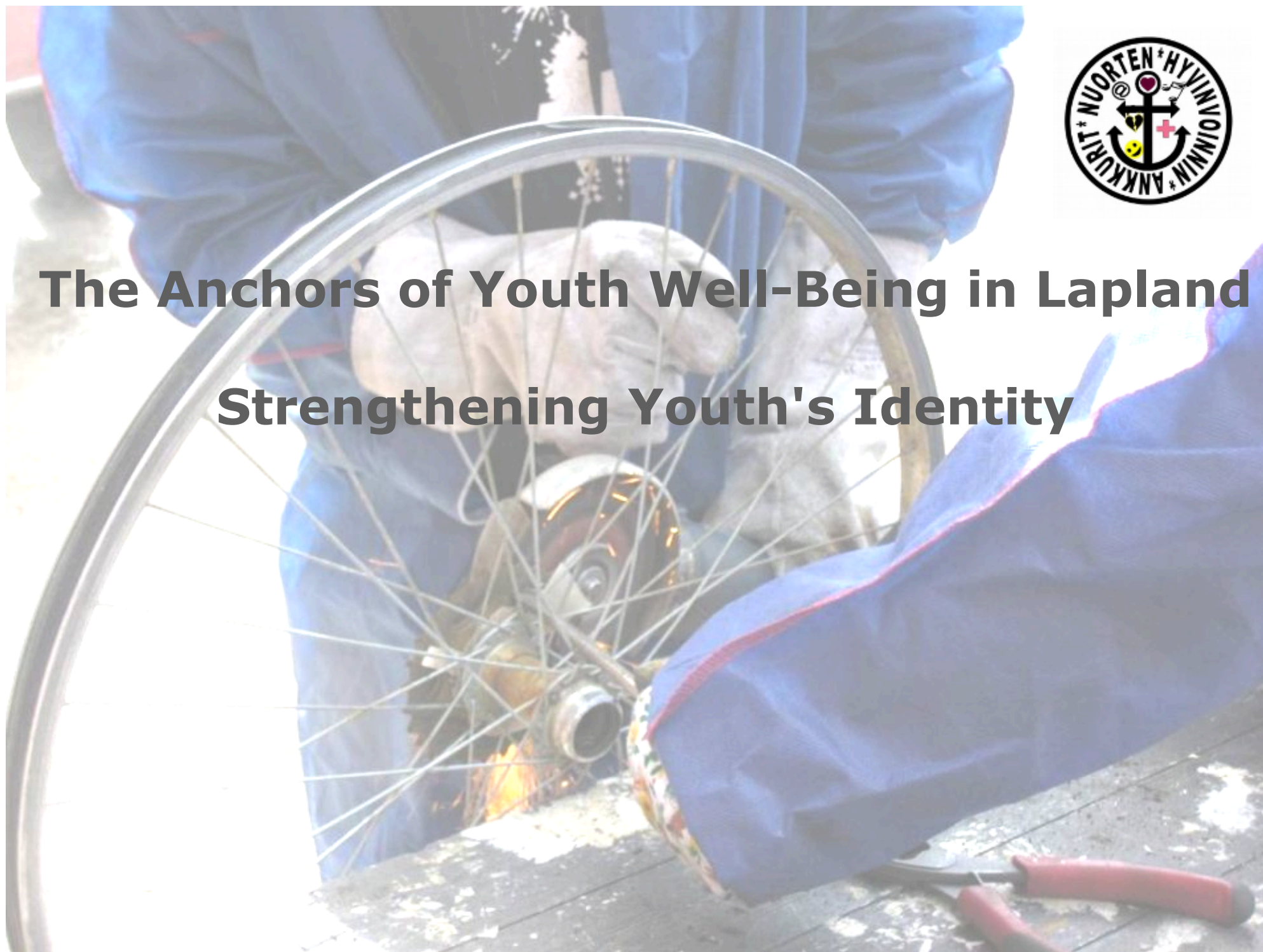




The Anchors of Youth Well-Being in Lapland

Strengthening Youth's Identity



The Anchors of Youth Well-Being in Lapland

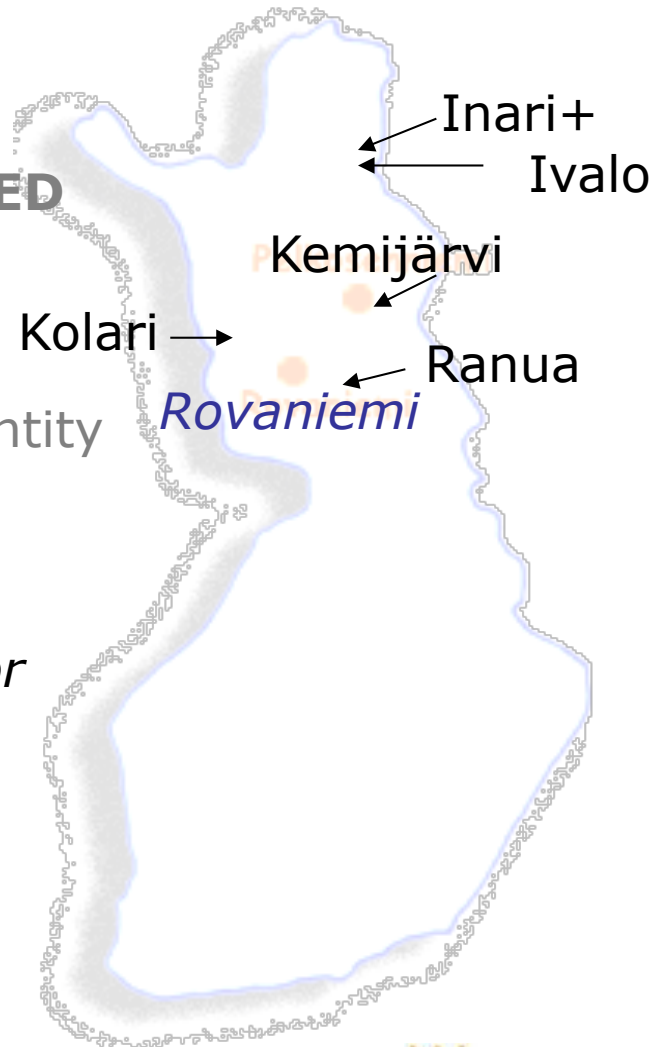
COMMUNITY-BASED ART EDUCATION

Social issues
Empowered actions
Culture, art and identity
Community art
Site-specific art

*art-based models for
early intervention*



Pohjois-Suomen sosiaalialan osaamiskeskus
Lapin toimintayksikkö



SOCIAL WORK

a study about the state of the welfare of the young in Lapland

-Survey: 15 municipalities
24 schools

(562 15 years old pupils)

-Selected group and personal
Interviews



Arts education's contribution

Art can be seen as a vital factor of success rather than a soft option in schools, wider community and cross-sector collaboration

unlock ways of seeing and doing
learning to see the alternatives
challenging assumptions

imagination and vision for multifaceted future

The proces through art is performative

It can lead to unexpected directions like

- new innovations for sustainable livelihoods
- new products or ways of collaborate
- attempts to slow down everyday life
- rethinking the history and local heritage
- provocative actions
- small changes in thinking or attitudes
- empowerment and emancipation
- ...

literature and further information

- *The Anchors of Youth Well-Being in Lapland - Nuorten hyvinvoinnin ankkurit* project. [Online]. Available at: <http://www.sosiaalikallega.fi/hankkeet/nuorten-hyvinvoinnin-ankkurit> [accessed: 5 June 2010].
- Art Community and Environment Project Archive. [Online] Available at: <http://ace.ulaplang.fi/> [accessed: 5 September 2009].
- Hiltunen, M. 2009. *Yhteisöllinen taidekasvatus. Performatiivisesti pohjoisissa sosiokulttuurisissa ympäristöissä*. Acta Universitatis Lapponiensis 160, Rovaniemi: Lapin yliopistokustannus. Available at: <http://www.ulapland.fi/?Deptid=28914>.
- Jokela, T. 2008a. *Collaboratory Project-Based Studies in Art Teacher Education: An Environmental Perspective*, in *Art, Community and Environment: Educational Perspectives*, edited by G. Coutts and T. Jokela. Bristol: Intellect Books, 217–240
- Kester, G. H., *Conversation Pieces: Community and Communication in Modern Art*. Berkeley and Los Angeles, University of California Press, 2004.
- Matarasso, F., *Use or Ornament? The Social Impact of Participation in the Arts*. Comedia. London, 1997.

Examples of the articles

- Hiltunen, M. (2008). Community-based Art Education – a Space for agency? In Coutts, G. & Jokela, T. (eds.) *Community, environment and Art. An educational perspective*. Intellect Books.
- Hiltunen, M. (2007). Embodied Experiences. Constructing a Collaborative Art Event in the Northern Environment. *Articles on Experiences 5 – Arts & Experience*. Toim. Mika Kylänen & Anna Häkkinen. Lapland Centre of Expertise for the Experience Industry 2007. Rovaniemi: University of Lapland Printing Centre, 62–90.
Www-sivu: [<http://www.elamystuotanto.org/files/20070130152437.pdf>]
- Hiltunen, M. (2005). The Fire Fox. Multisensory approach to Art Education in Lapland. *International Journal of Education through Art*. 1:2, pp. 161–177.
- Jokela, T. & Hiltunen, M. (2003). Art pedagogical Projects in Northern Wilderness and Villages. *Lifelong Learning in Europe*. Vol. VIII, issue 2/ 2003, 26–31.